

HTK (Honda Connectors): HDR series Cable connector for industrial camera link

Cable connector



Cable side male connector
Solder terminal type
P/N: HDR-E26MSG1+
Applicable back-shell:
P/N: HDR-E26(LPM+, LPH, ALPA+)

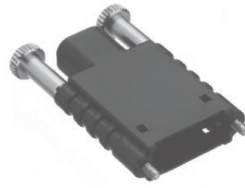


Cable side female connector
Solder terminal type
P/N: HDR-E26FSG1+
Applicable back-shell:
P/N: HDR-E26(LPM+, LPH, ALPA+)

Back-shell



Back-shell with metal shell
Screw lock type
P/N: HDR-E26LPM+
(for 6.8 x 9 mm oval shape cable opening)
Applicable connector:
P/N: HDR-E26MSG1+ (Solder terminal)
P/N: HDR-E26FSG+ (Solder terminal)



Back-shell with metal shell
Screw lock type
P/N: HDR-E26LPH+
(for 6 x 7 mm oval shape cable opening)
Applicable connector:
P/N: HDR-E26MSG1+ (Solder terminal)
P/N: HDR-E26FSG+ (Solder terminal)



R/A Back-shell with metal shell
Screw lock type
P/N: HDR-E26ALPA+
(for 6.7 x 7.5 mm oval shape cable opening)
Applicable connector:
P/N: HDR-E26MSG1+ (Solder terminal)
P/N: HDR-E26FSG+ (Solder terminal)

Material

Part name	Material and Finish
Female Contact	Phosphor bronze, selective gold(contact area) over nickel plating
Male Contact	Phosphor bronze, selective gold(contact area) over nickel plating
Insulator	PA9T(GF) resin, UL 94V-0 (Black color)
Metal shell	Steel, nickel plating
Screw Lock Device	Steel, nickel plating
Back-shell Body	ABS resin, UL 94V-0 (Black color)
Back-shell metal	Steel, nickel plating

Rev.1.3

Distributor

TOKOH DENKI CO., LTD.

Home Page: <http://www.tokoh.biz/>

E-Mail: office@tokoh.biz

